



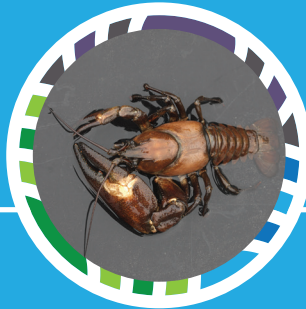
BIOSECURITY

This procedure applies to all staff, volunteers and individuals carrying out waterways management

HAZARDS



SEEDS & PLANT FRAGMENTS
e.g. roots, rhizomes



WHOLE ORGANISMS



MICROORGANISMS
e.g. bacteria, fungal spores, viruses

CHECK



PPE
e.g. boots, waders, clothing seams



TOOLS
e.g. saws, litter pickers, rope



EQUIPMENT
e.g. vehicle tyres, boats

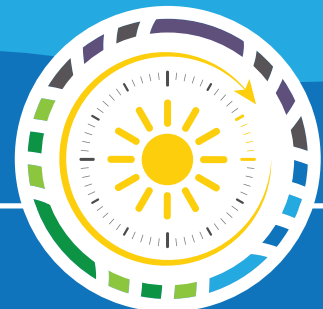
CLEAN



RINSE
with clean water to remove all mud and debris



DISINFECT
Some invasives are too small to be seen with the naked eye - thoroughly disinfect



DRY
for a minimum of 48 hours

Remember: Cleaning should be carried out on hardstanding 10m from watercourse